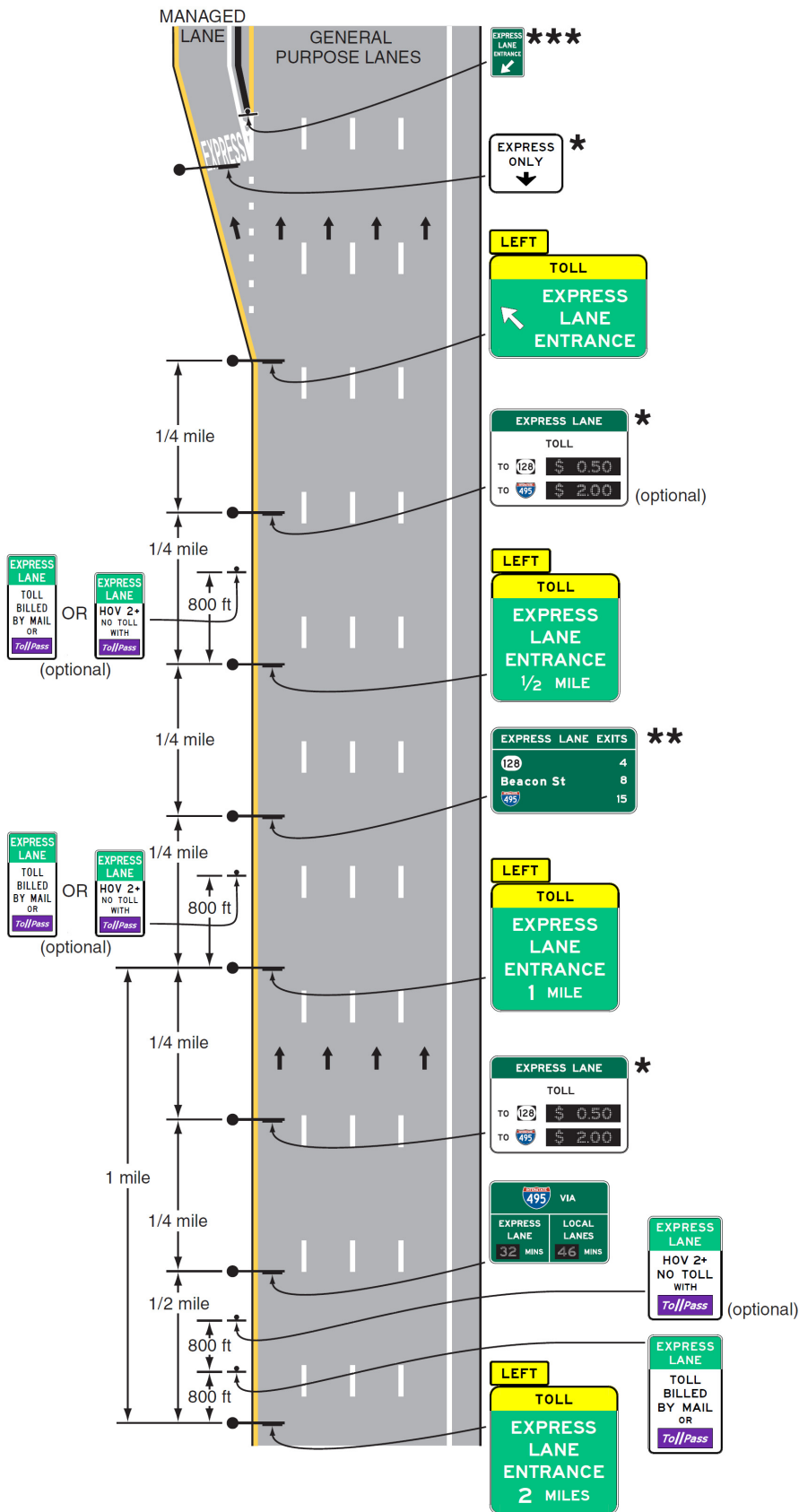


**Figure 2G-XX. Example of Signing for the Entrance to an Access-Restricted Priced Managed Lane on which Registration in a Toll Account Program is not Required**



Legend

→ Direction of travel

Notes:

1. For access to a managed lane on the right-hand side, the same signing sequence would be used with adjustments made to sign messages
2. Geometry is for illustrative purposes only; use locally applied geometric criteria
3. The minimum vehicle occupancy requirement and hours of operation on the sign may vary for each facility
4. Vehicles need not have a registered ETC account. Tolls to non-registered vehicles are billed by mail to vehicle owners through license plate character recognition. Toll discounts or exemptions through a registration program might be applicable for certain vehicles.
5. The basic toll rate for passenger vehicles is displayed. Reduced tolls might be available for registered ETC accounts or for high-occupancy vehicles.
6. See Chapter 3D for pavement markings

\* Potential location of a Changeable Message Sign (CMS) for reversible or contraflow operations

\*\* For access-restricted facilities; destinations may be augmented to accompany routes on Interchange Sequence signs (see Figure 2E-31)

\*\*\* Barrier-separated facilities only